

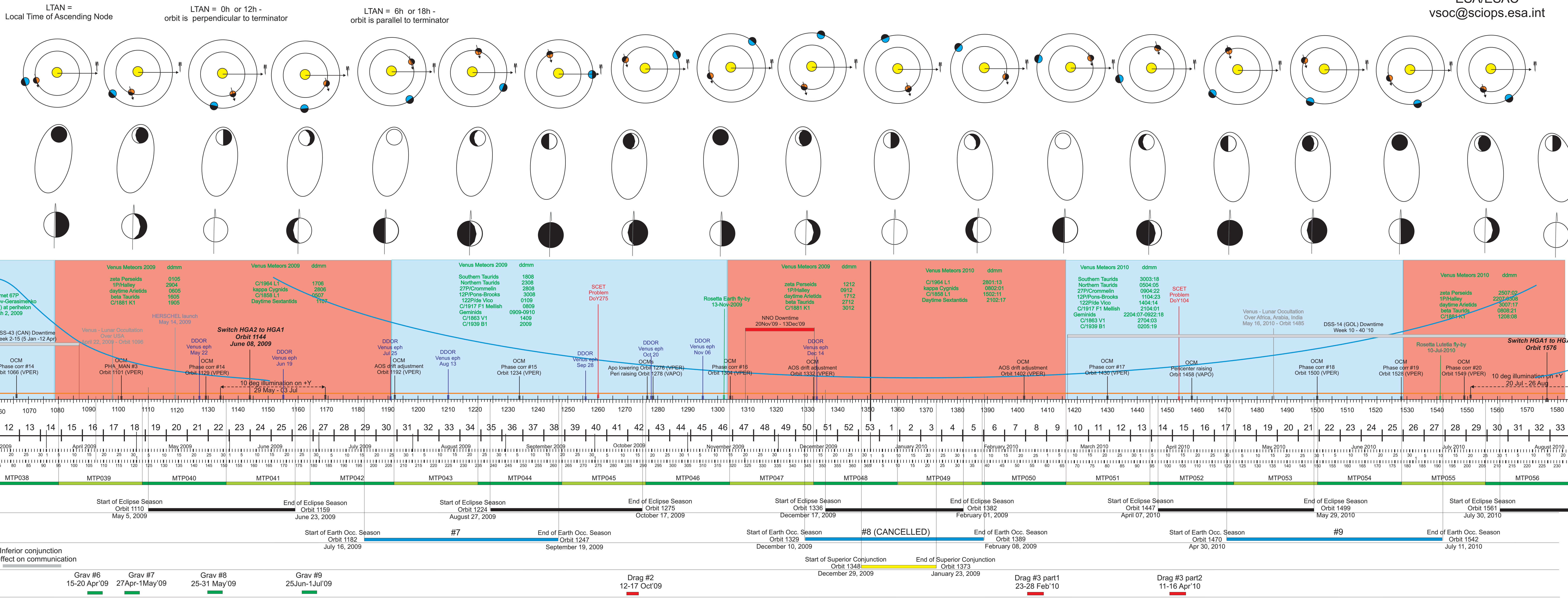


# Science Mission Overview: second extension

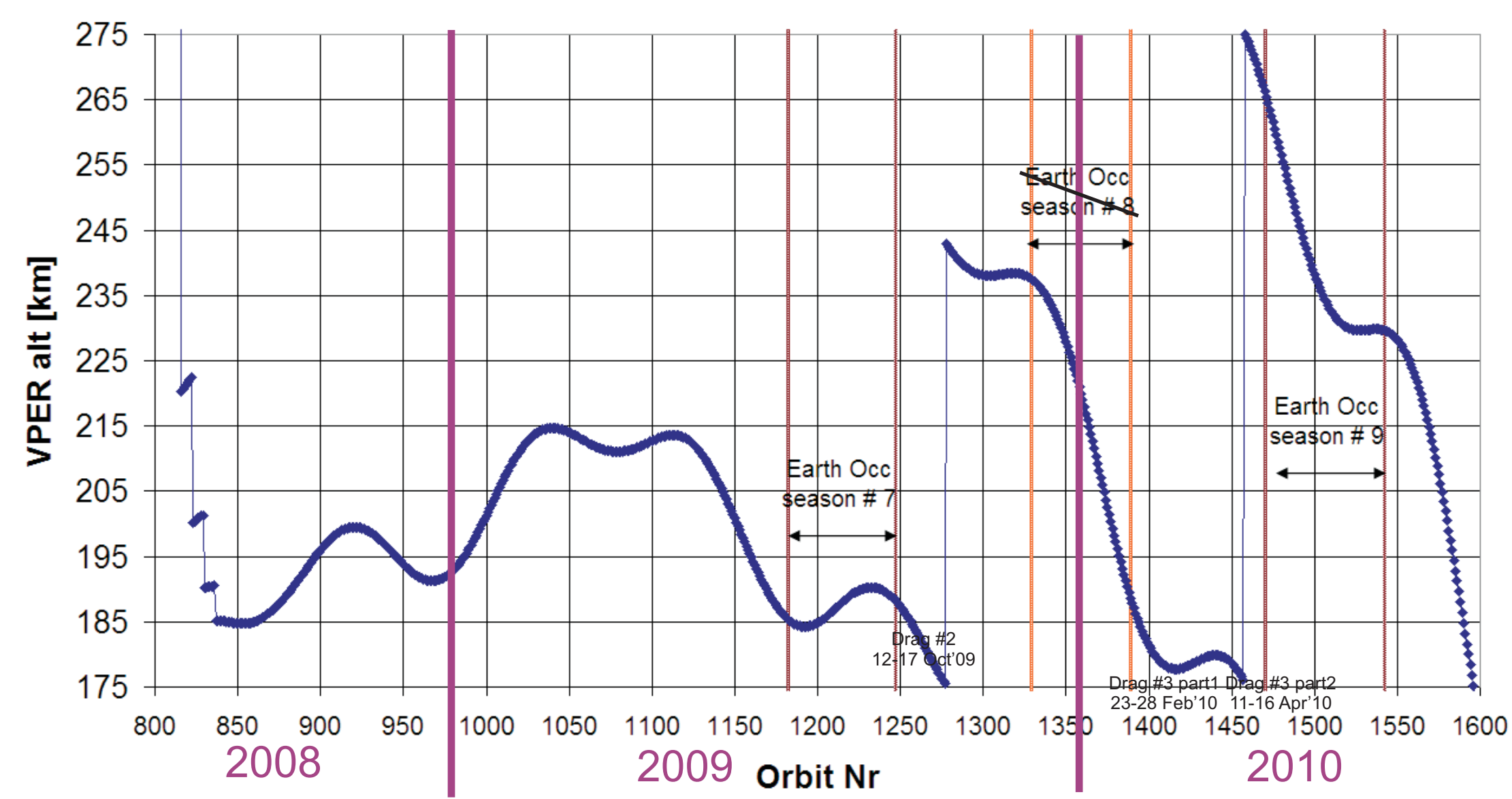
VEX-SCIOPS-PO-013\_1\_8\_Science\_Postor\_Ext2\_MTP038\_MTP056\_2010Jan27.cdr

ESA Unclassified - Releasable to the Public

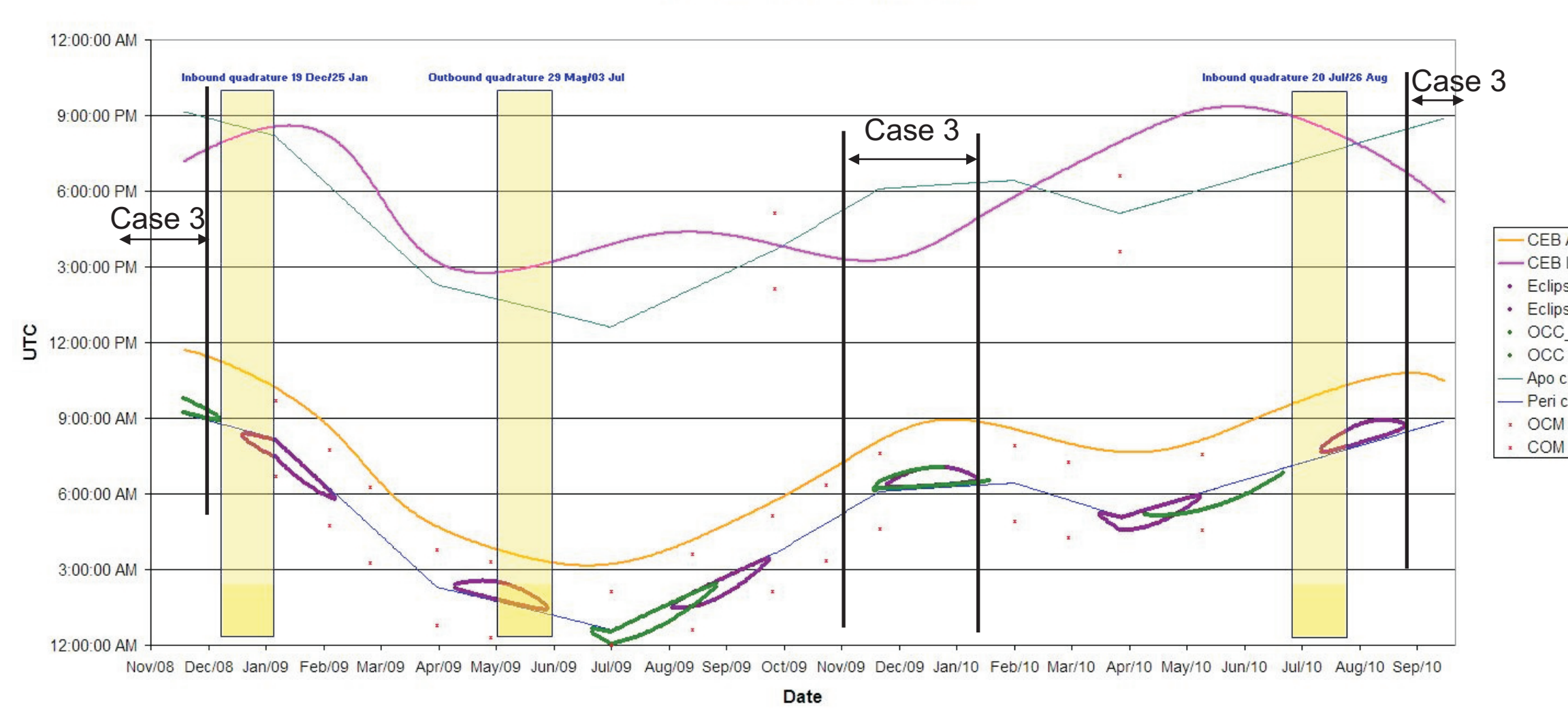
VSO team  
SRE-OS Department  
ESA/ESAC  
vsoc@sciops.esa.int



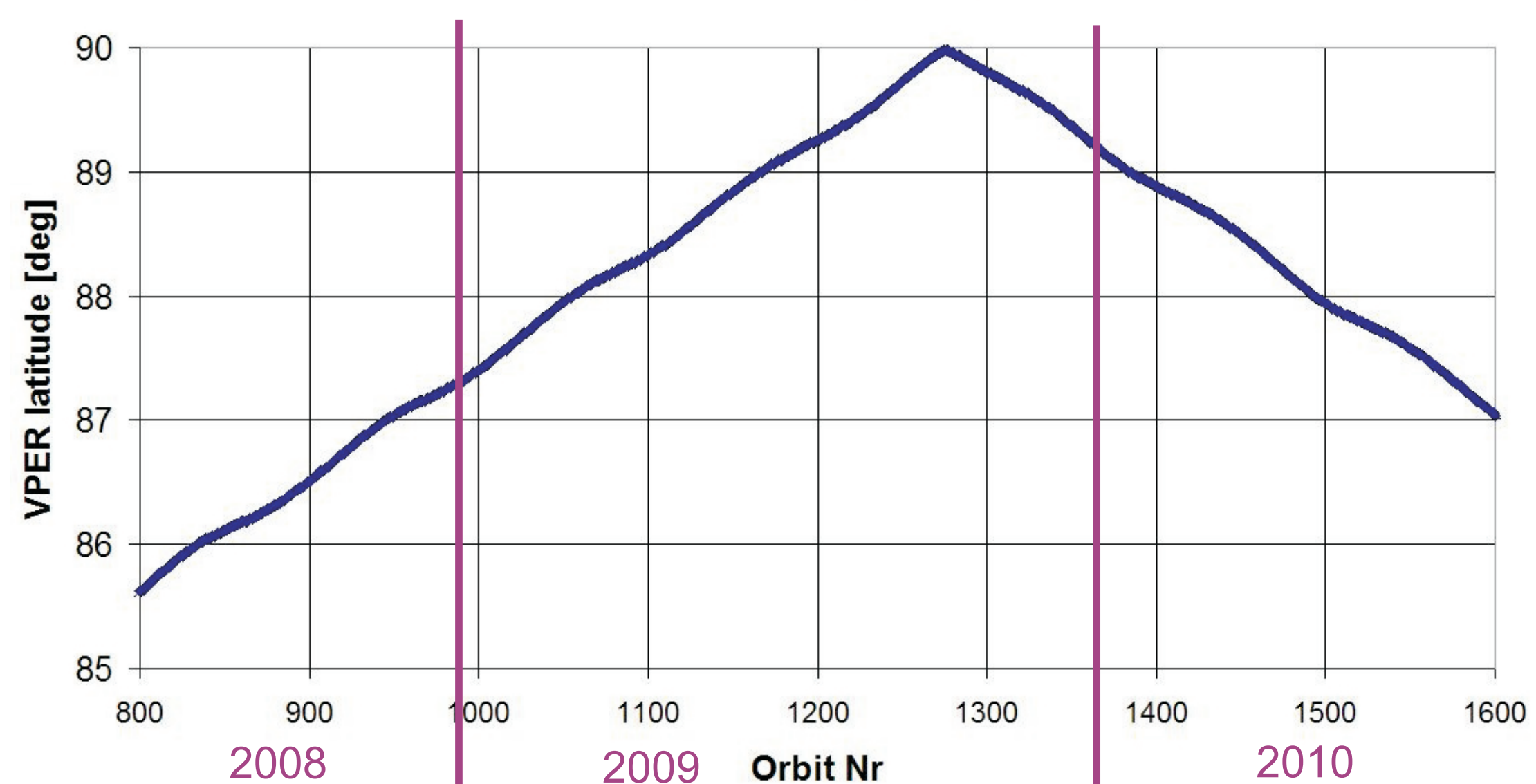
VPER altitude and Occ seasons



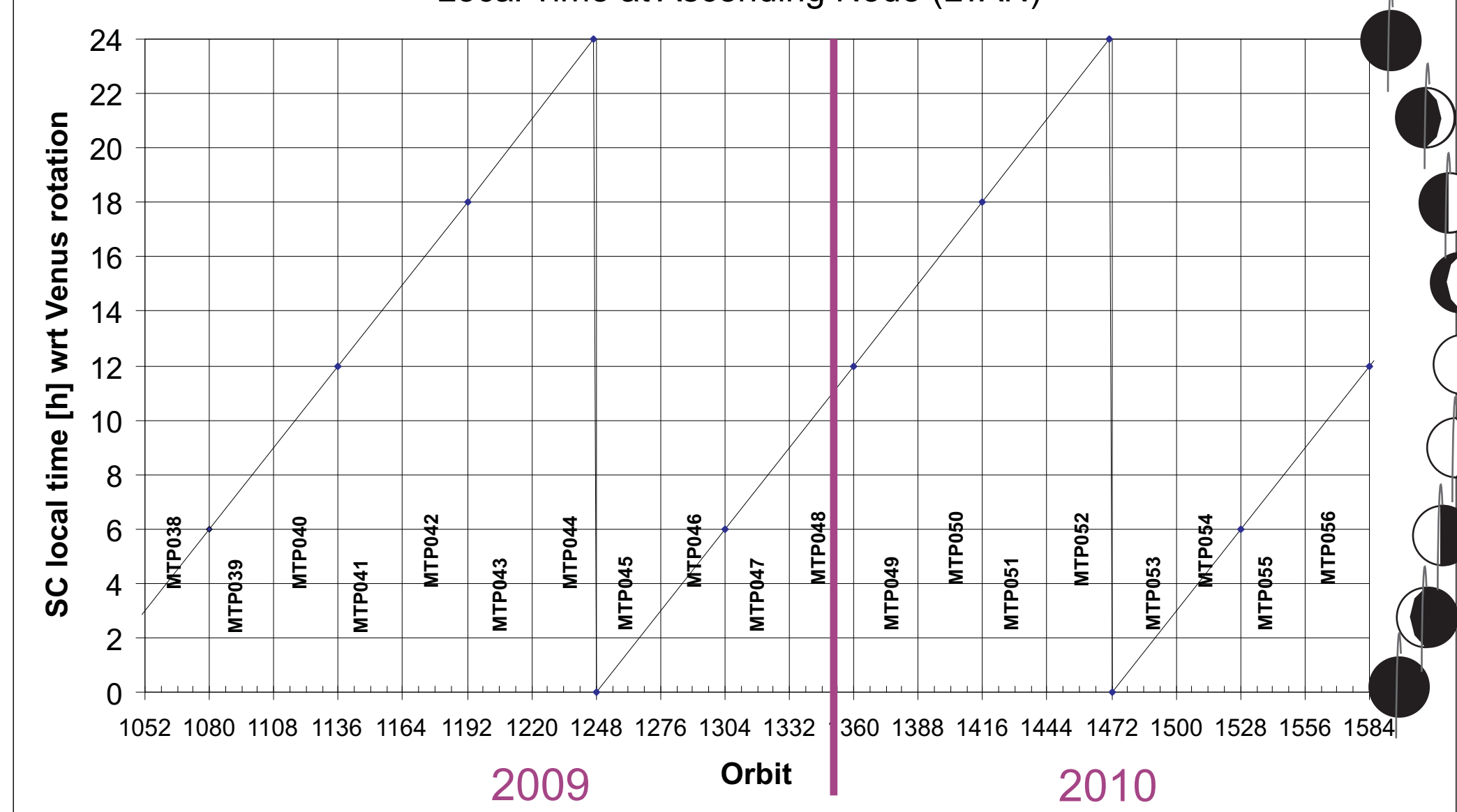
2009-2010 Event Extraction



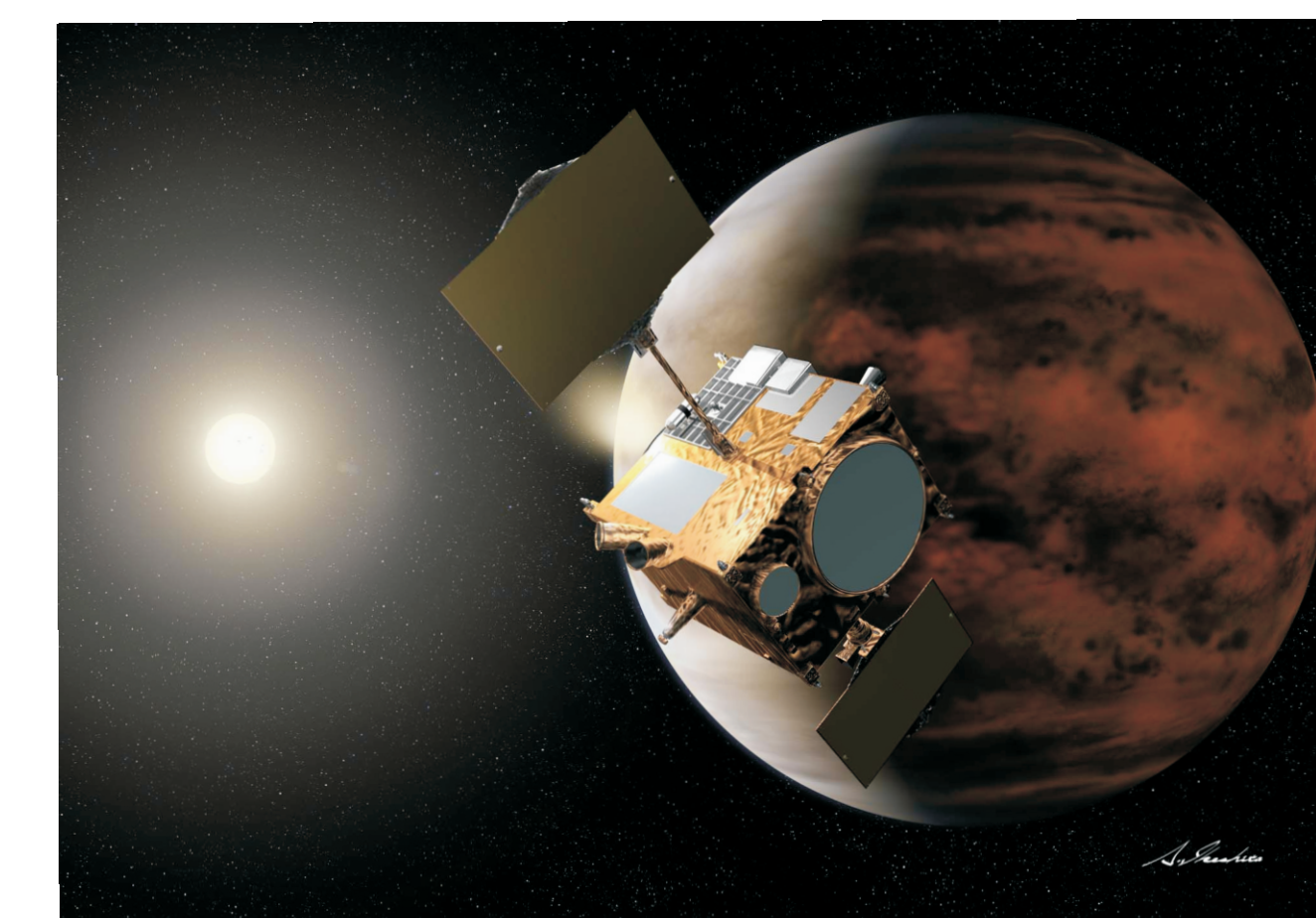
VPER latitude evolution



MTP038 - MTP056  
Local Time at Ascending Node (LTAN)

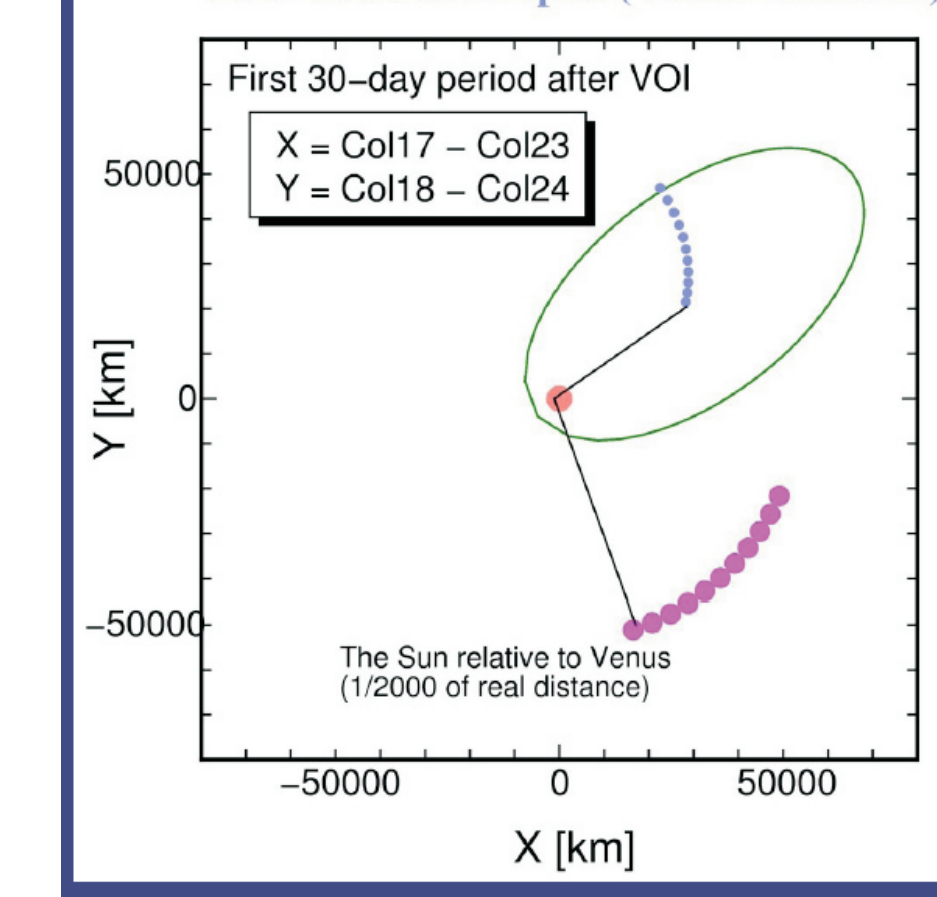


Planet-C (JAXA):  
expected launch May-June 2010,  
arrival end 2010



	Scientific targets	Wavelengths
LAC	Lightning and airglow	777 nm (avg), 551, 558 nm (avg), 545 nm (background)
LIR	Cloud-top temperature	9-11 μm
JVI	Cloud motion, UV absorber and SO <sub>2</sub> distribution	285 nm, 365 nm
R1	Surface temp., minerals and clouds	0.90, 0.97, 1.01 μm (night), 0.80 μm (day)
R2	Mid to lower cloud motion, CO <sub>2</sub> cloud-top alt., and zodiacal light	1.735, 2.26, 2.32 μm (night), 2.02 μm (day), 1.165 μm (zodiacal light)

VCO Orbit in Ecliptic (Venus Centered)



Planet Orbits in Ecliptic (Sun Centered)

