



# PACS-S SpecInterpolate Validation and Testing

1 December 2014

E. Puga, B. Vandenbussche, P. Royer, J. de Jong



# Gridding Algorithm: Weighted Averaging



- PacsRebinnedCube is an irregularly gridded collection of spectra.
- SpecProject: projection algorithm that for undersampled maps has the effect of:
  - Nearest Neighbour spectrum for output map pixels inside the area of input map pixels
  - Weighted Averaged spectrum for output map pixels that overlap with adjacent input map pixels (weights are the overlap area between the input and output pixel area)

$$I_{x_o, y_o} = \frac{\sum_i \sum_{x_i} \sum_{y_i} d_{x_i, y_i} a_{x_i, y_i, x_o, y_o} s_i^2}{\sum_i \sum_{x_i} \sum_{y_i} a_{x_i, y_i, x_o, y_o}}$$

$d_{x_i, y_i}$  = intensity of input pixel ( $x_i, y_i$ )

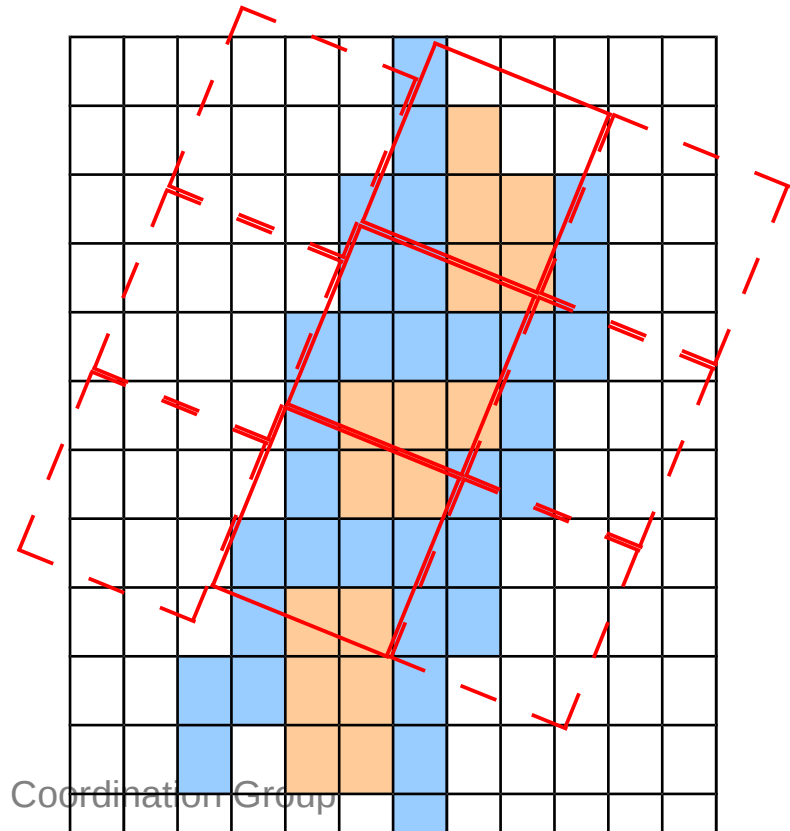
$a_{x_i, y_i, x_o, y_o}$  = overlap area: input pixel ( $x_i, y_i$ )  $\wedge$  output pixel ( $x_o, y_o$ )

Calculated using Hardy Blackwell algorithm

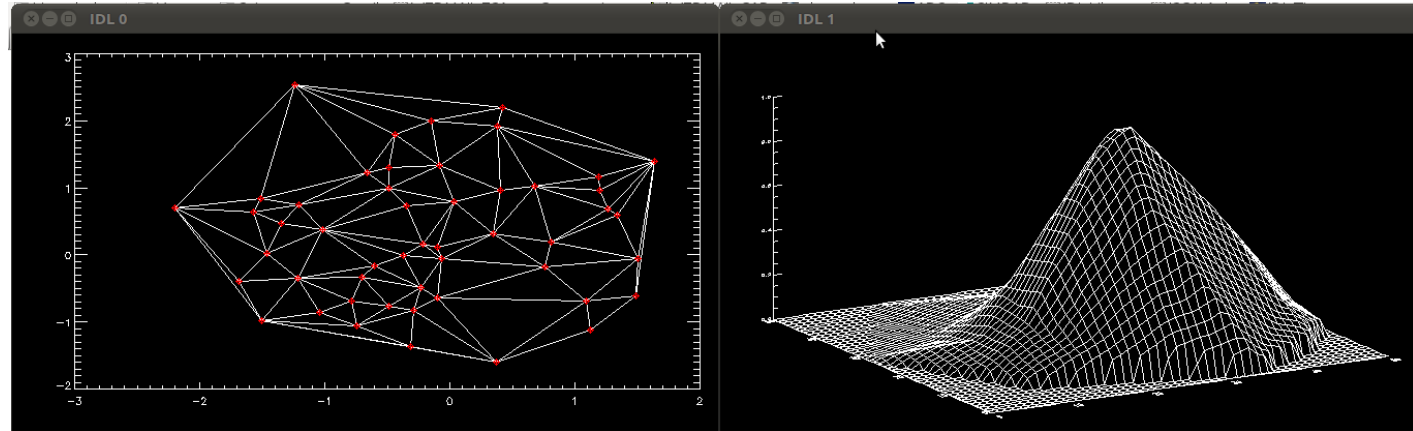
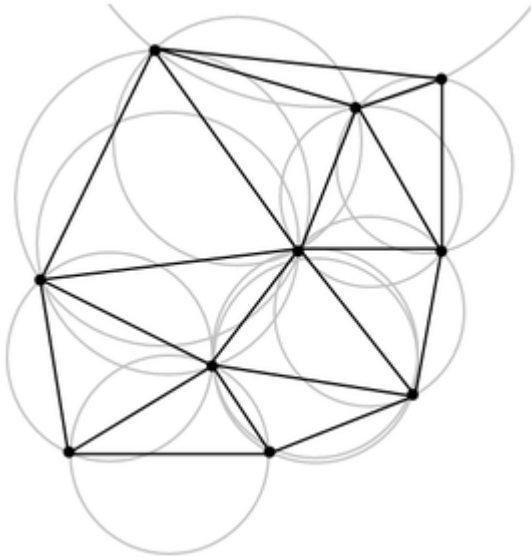
Flux conservation term can be

- On
- Off (PACS#5018)

$$s_i^2 = \frac{\text{pixel area input image}}{\text{pixel area output image}} = \frac{9.26^2}{cdelt_o^2}$$



- Delaunay Triangulation
- Interpolation on a regular grid
- Flux conservation?
- Grid size?
- Error propagation?

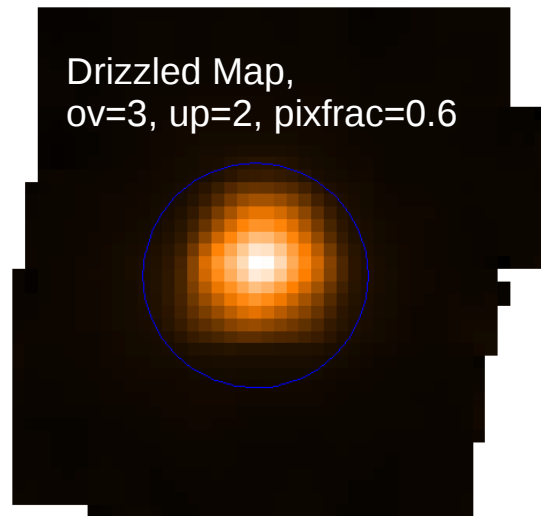


- Comparison for oversampled maps:
  - Drizzle (reference for map pixel grid)
  - SpecProject
  - SpecInterpolate
- Comparison for undersampled maps:
  - Drizzle (reference from oversampled map)
  - SpecProject (pixel grid size= 4.7")
  - SpecInterpolate (pixel grid size=4.7")
  - Central spaxel spectrum + PSC

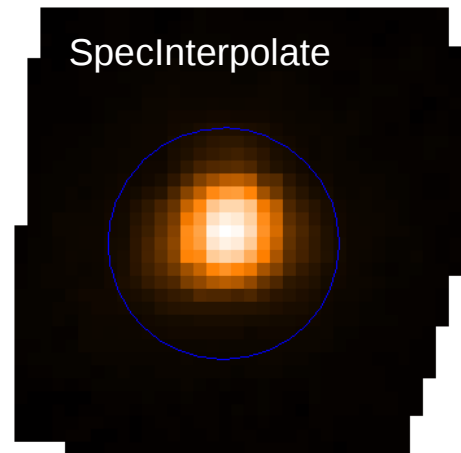


- The footprint from specInterpolate is generally smaller than specProject and drizzle because the Delaunay interpolation algorithm does not allow for extrapolation outside of the irregular triangles created spatially.
- This is not much of a problem for oversampled maps, but it is for undersampled (pacsRebinnedCube)

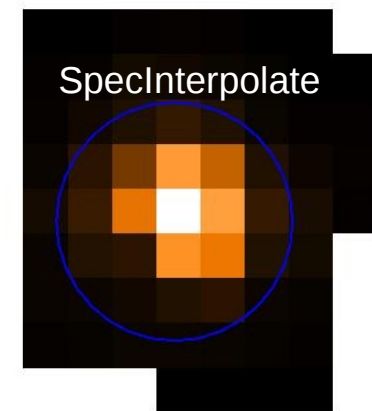
Integrated maps in band B3A



Oversampled  
PixSize=1.38"



Oversampled  
PixSize=1.38"



Undersampled  
PixSize=4.7"



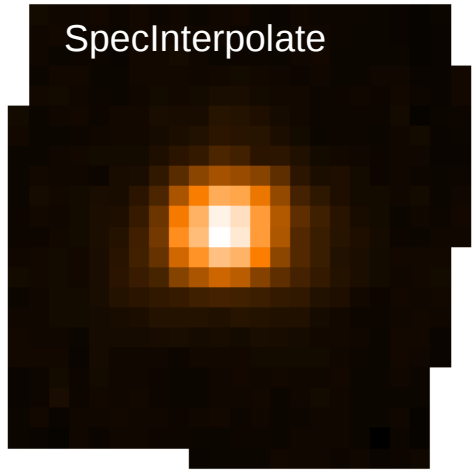
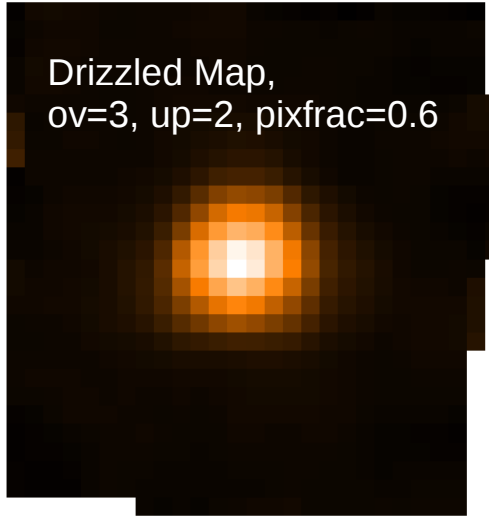
# Flux Conservation



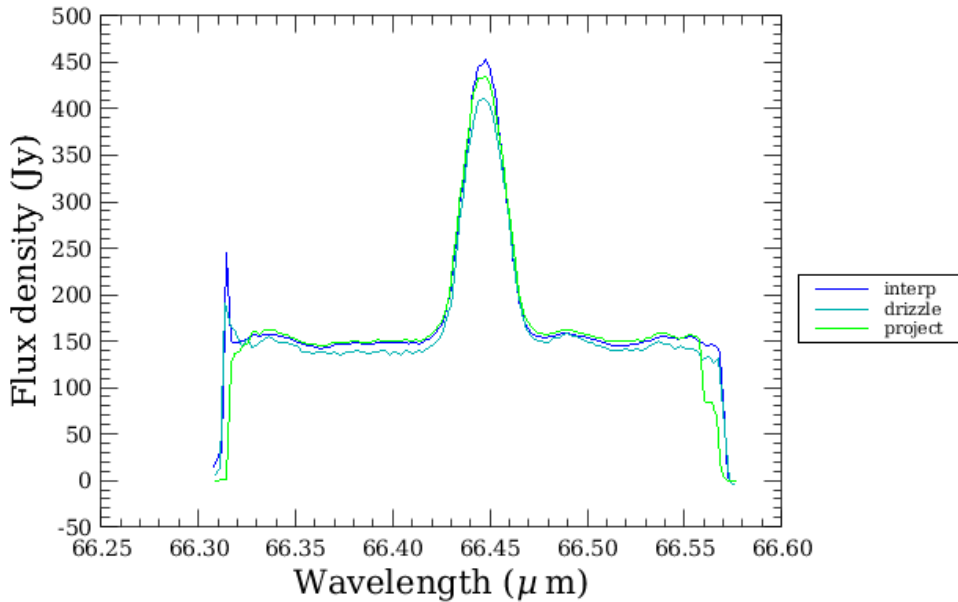
# Oversampled Maps + Sum(Map)



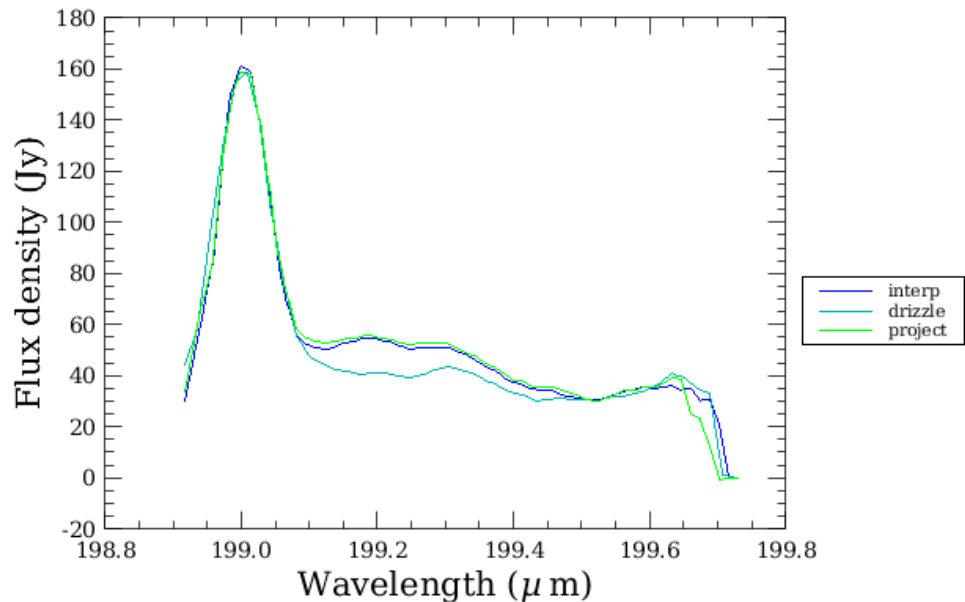
PixelSize=2.1"



blue, gridPix=1.4

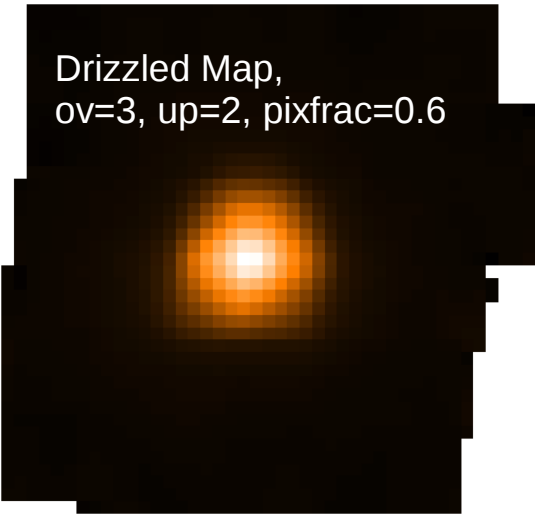


red, gridPix=2.1

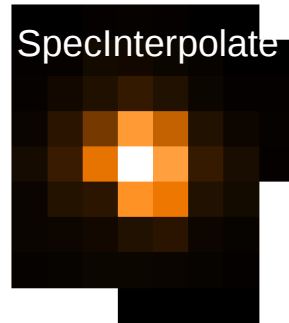




# Undersampled Maps + SUM(Map)

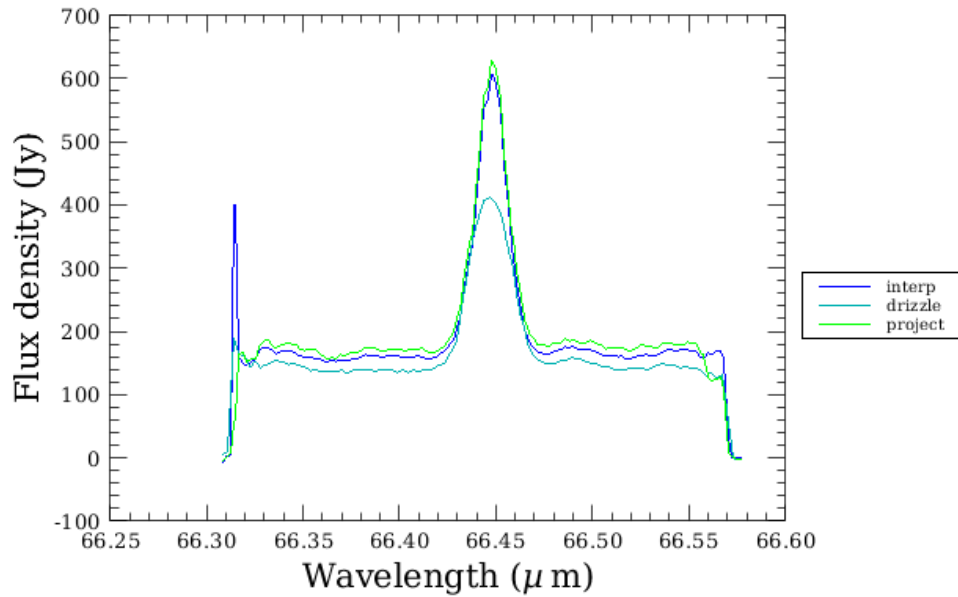


rasterPos=[12]

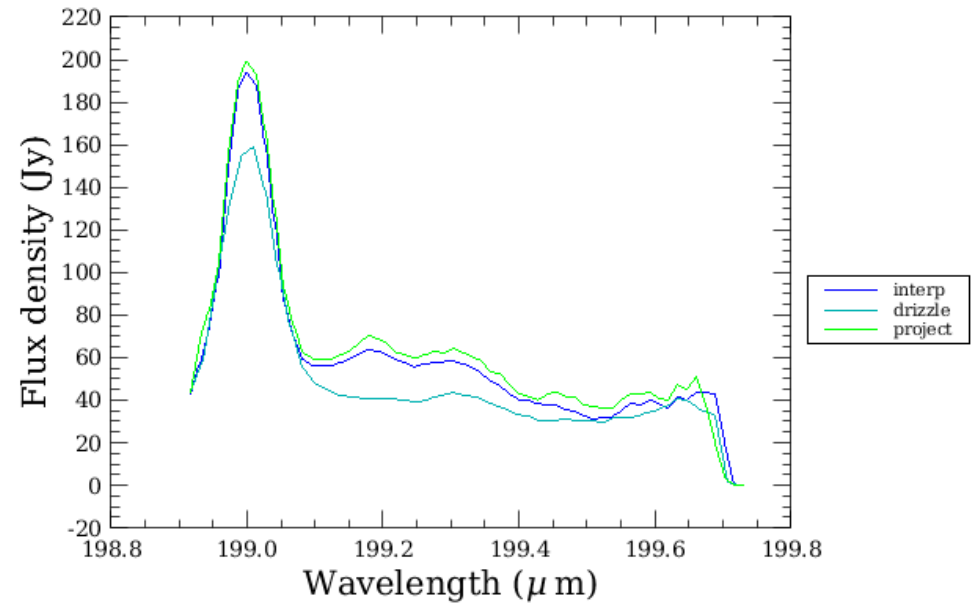


PixelSize drizzle=1.38"  
PixelSize interp, project = 4.7"

blue, gridPix=4.7

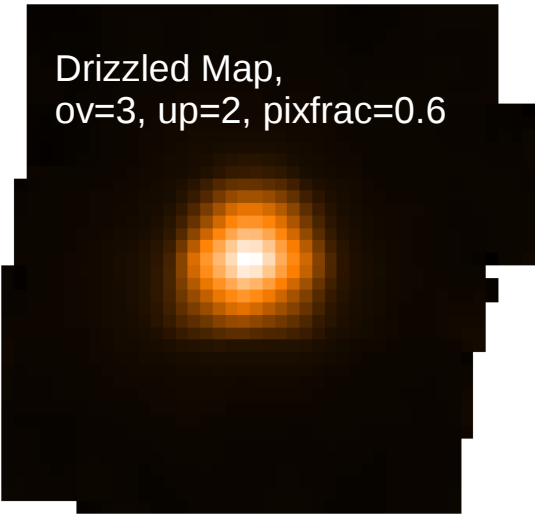


red, gridPix=4.7

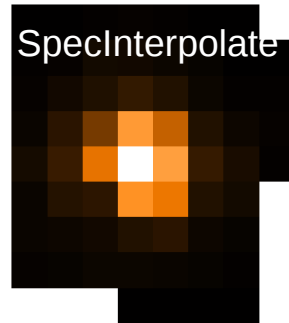




# Undersampled Maps + SUM(Map)

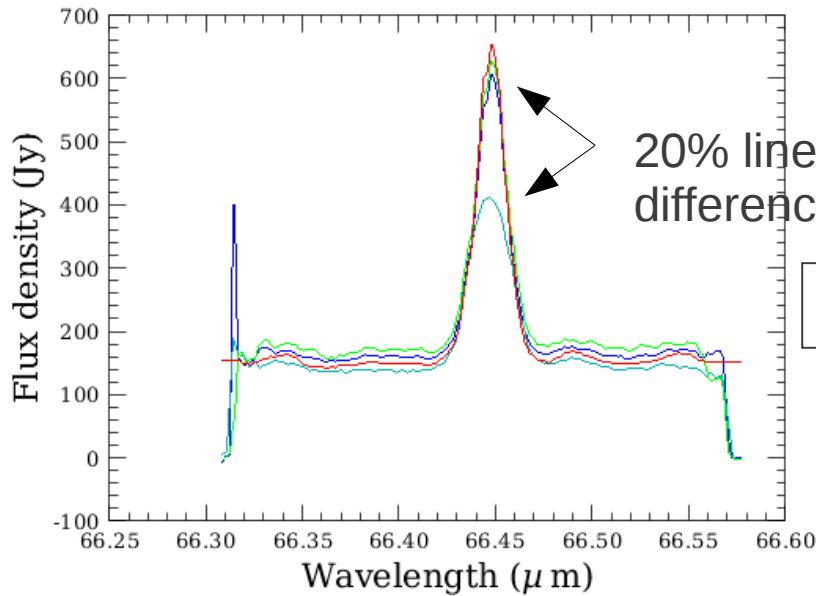


rasterPos=[12]

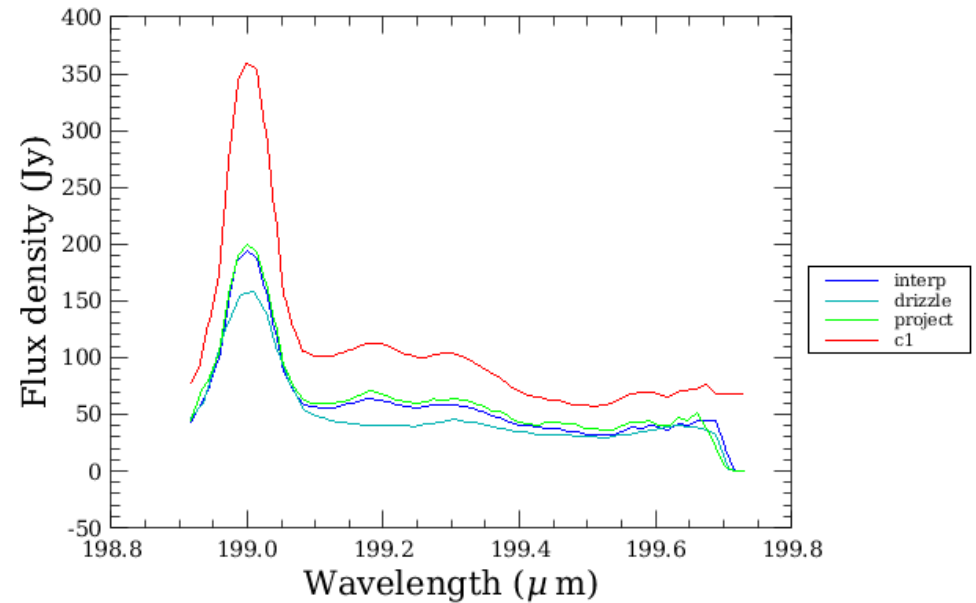


PixelSize drizzle=1.38"  
PixelSize interp, project = 4.7"

blue, gridPix=4.7



red, gridPix=4.7



ratic





# Undersampled Maps + SUM(Map)

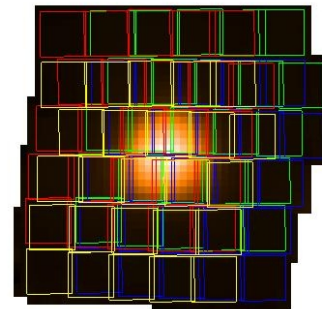
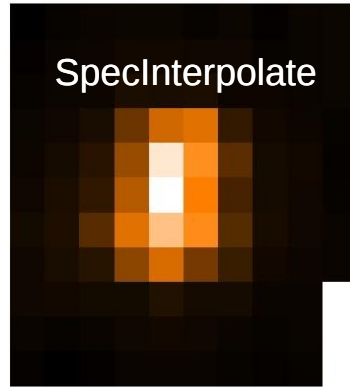
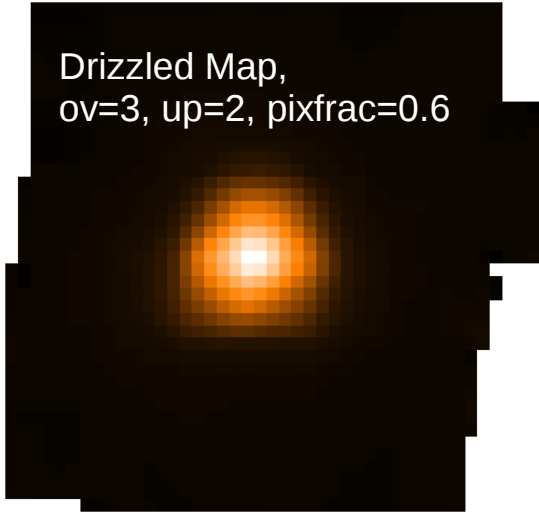


RasterPos=[0,4,20,24]

Drizzled Map,  
ov=3, up=2, pixfrac=0.6

SpecInterpolate

PixelSize drizzle=1.38"  
PixelSize interp, project = 4.7"

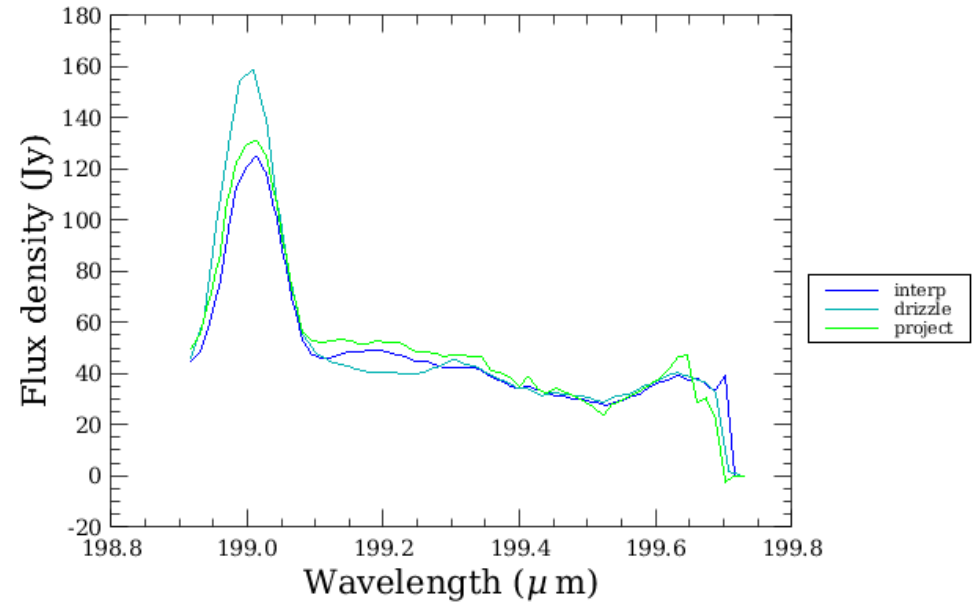
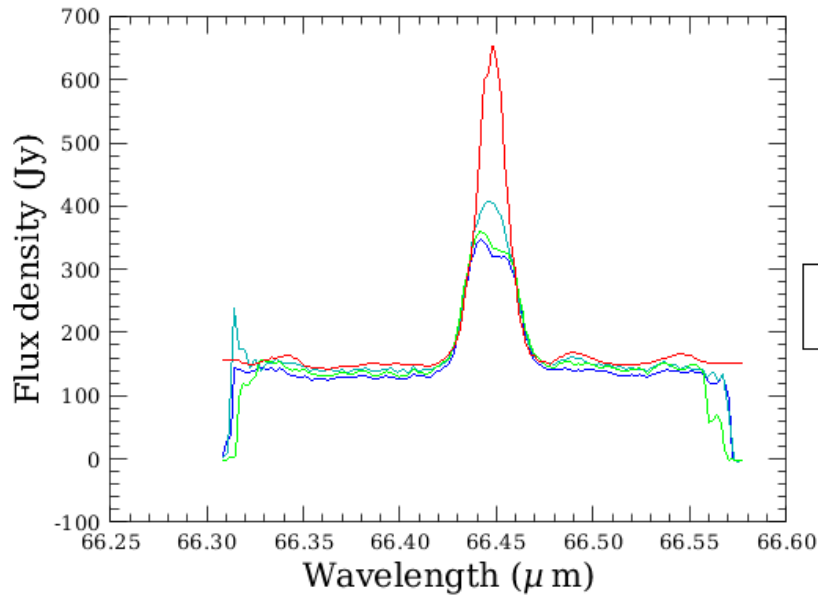


blue, gridPix=4.7

red, gridPix=4.7

rasterPos [0,4,20,24]

rasterPos [0,4,20,24]



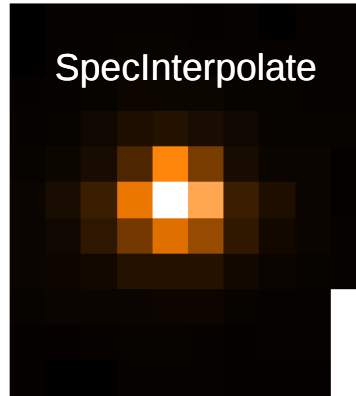
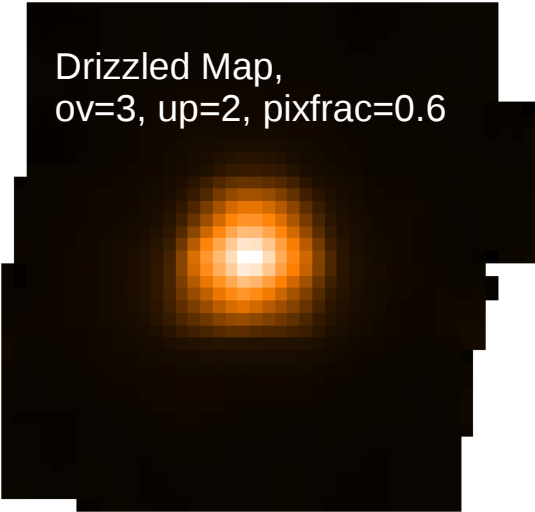
ratic



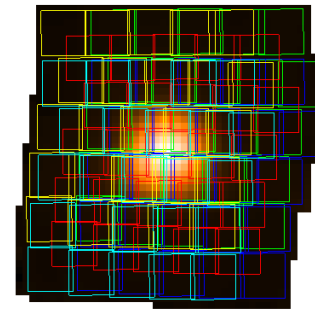
# Undersampled Maps + SUM(Map)



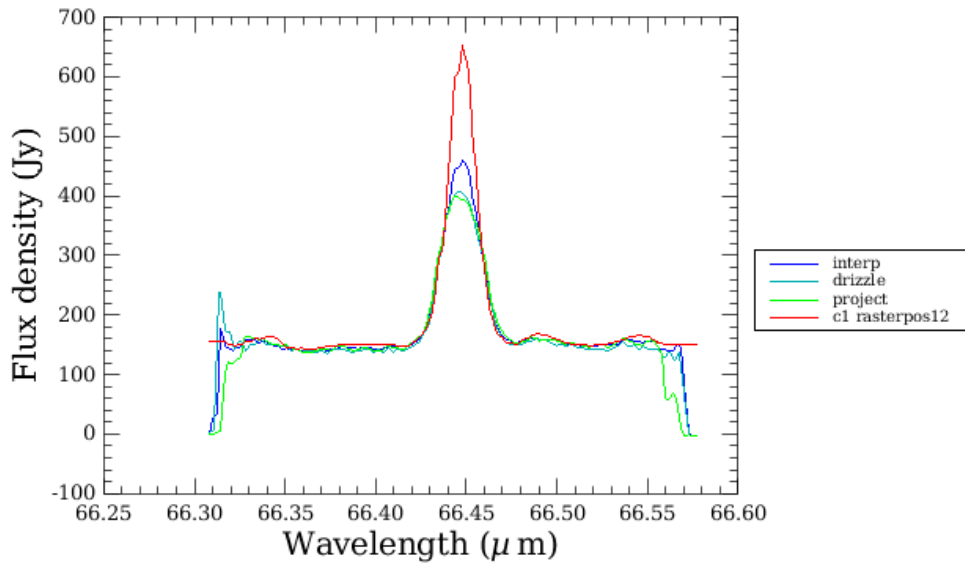
RasterPos=[0,4,12,20,24]



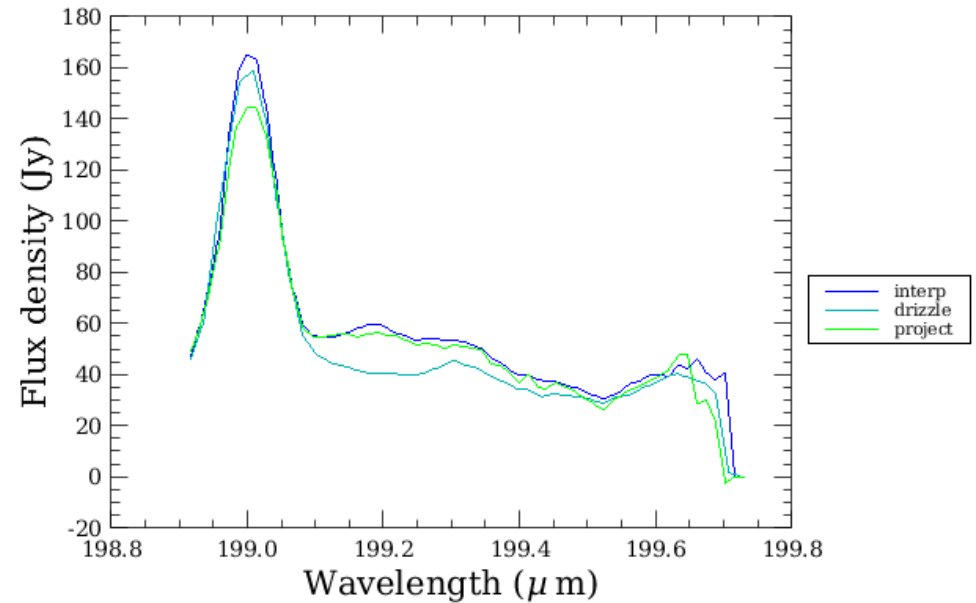
PixelSize drizzle=1.38"  
PixelSize interp, project = 4.7"



blue, gridPix=4.7  
rasterPos [0,4,12,20,24]



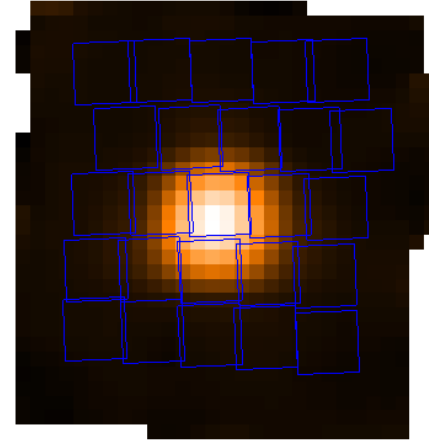
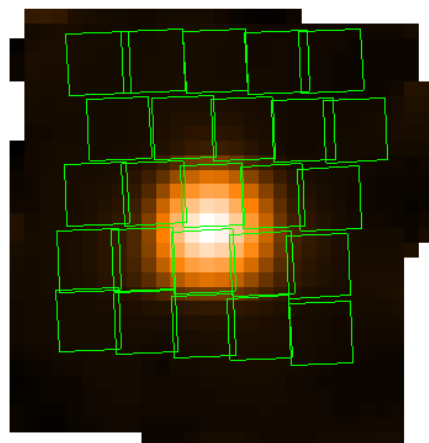
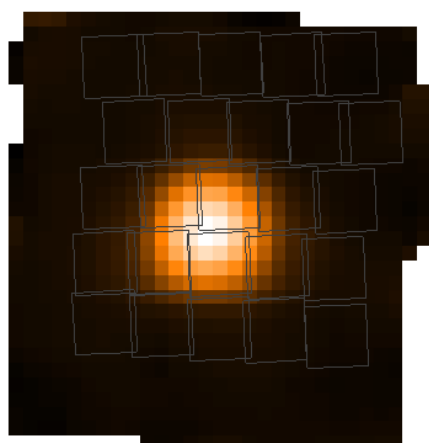
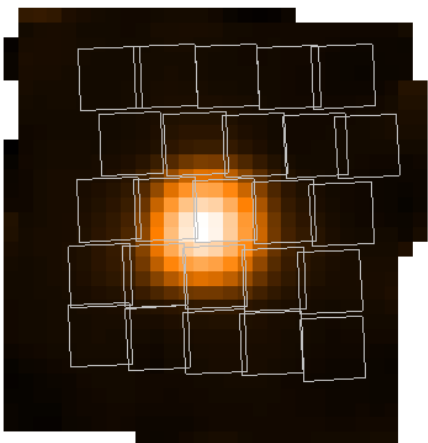
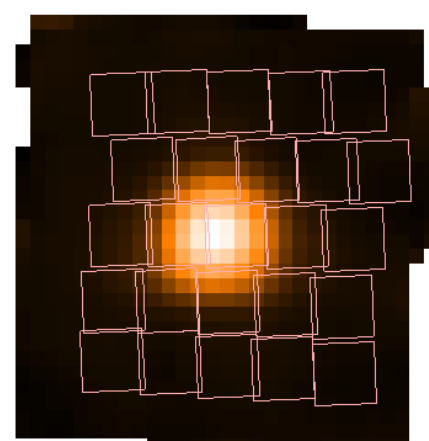
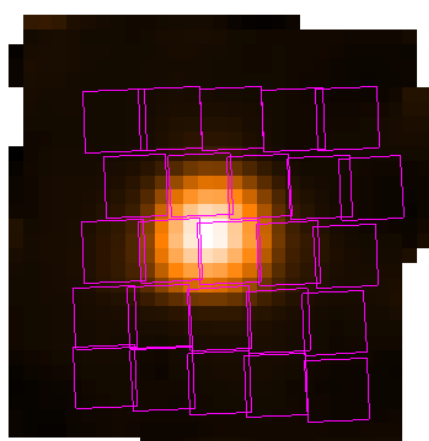
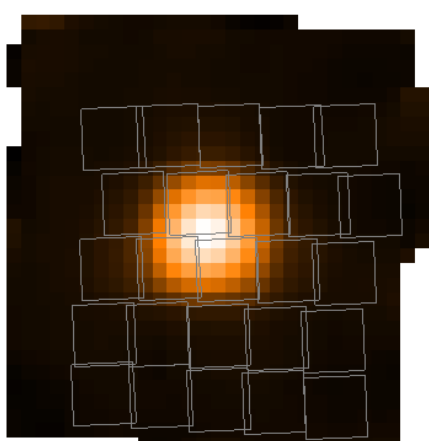
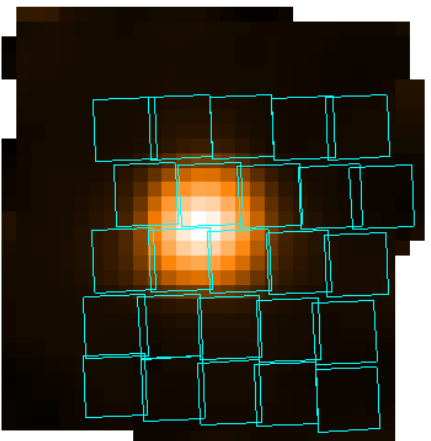
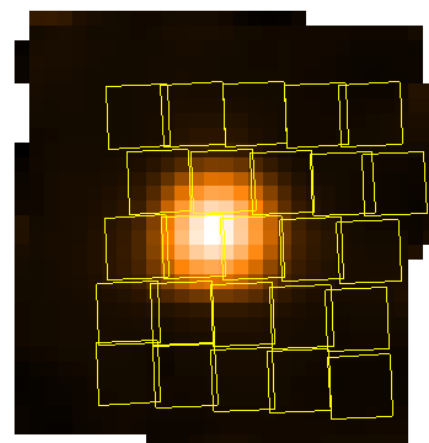
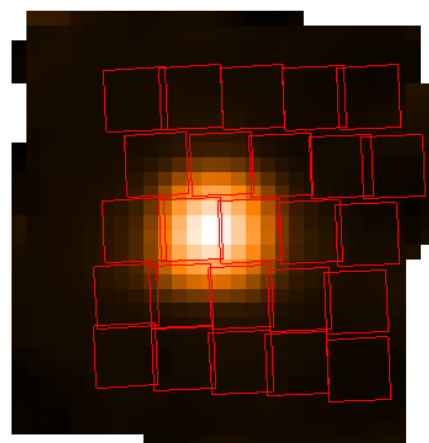
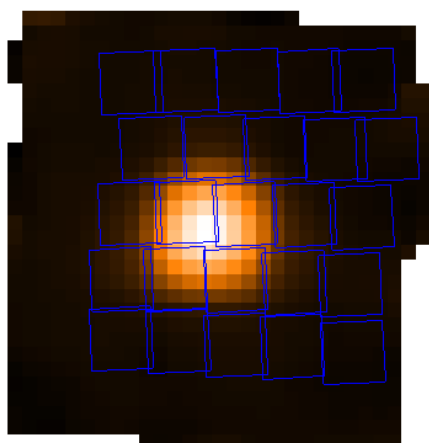
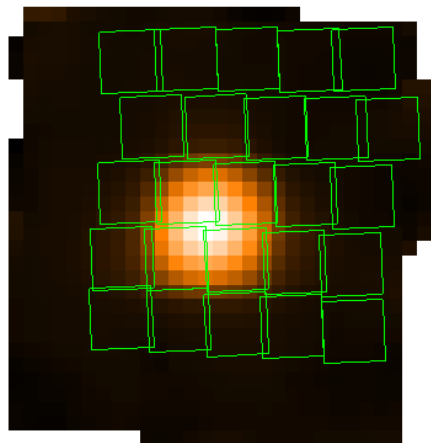
red, gridPix=4.7  
rasterPos [0,4,12,20,24]



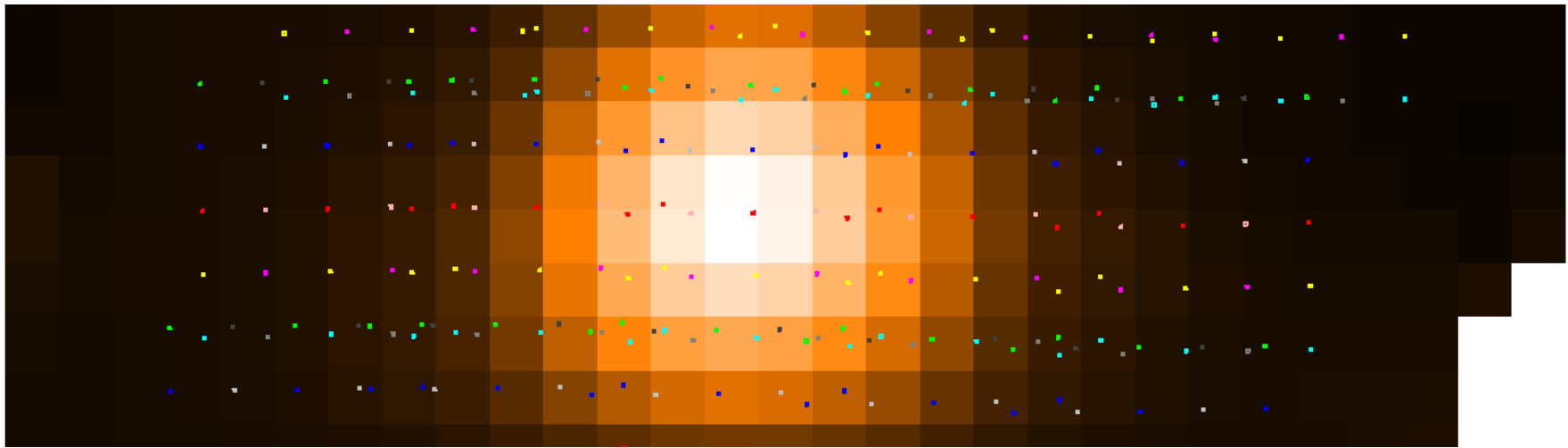
ratic



# Rdor Oversampled Map



ratio



Drizzle: ov=3, up=2, pixfrac=1

Peak is only sampled by rasterPos=[12]



# FoV Uniformity

